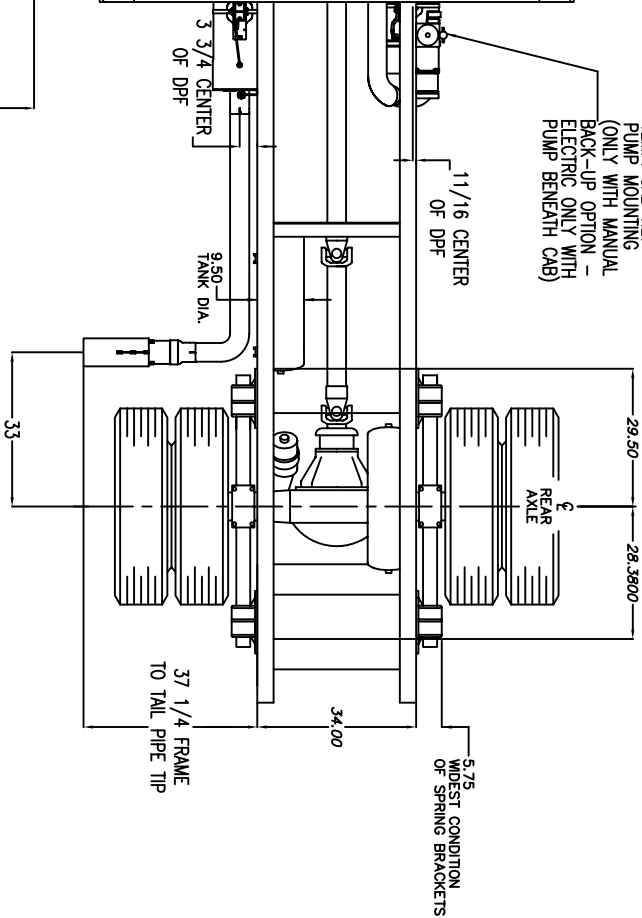
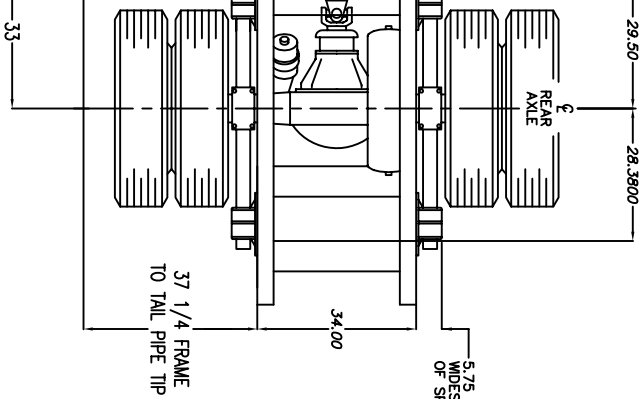


TEMP. CAB TILT  
PUMP MOUNTING  
(ONLY WITH MANUAL  
BACK-UP OPTION -  
ELECTRIC ONLY WITH  
PUMP BENEATH CAB)



5.75  
WIDEST CONDITION  
OF SPRING BRACKETS



37 1/4 FRAME  
TO TAIL PIPE TIP

33

3 3/4 CENTER  
OF DPF

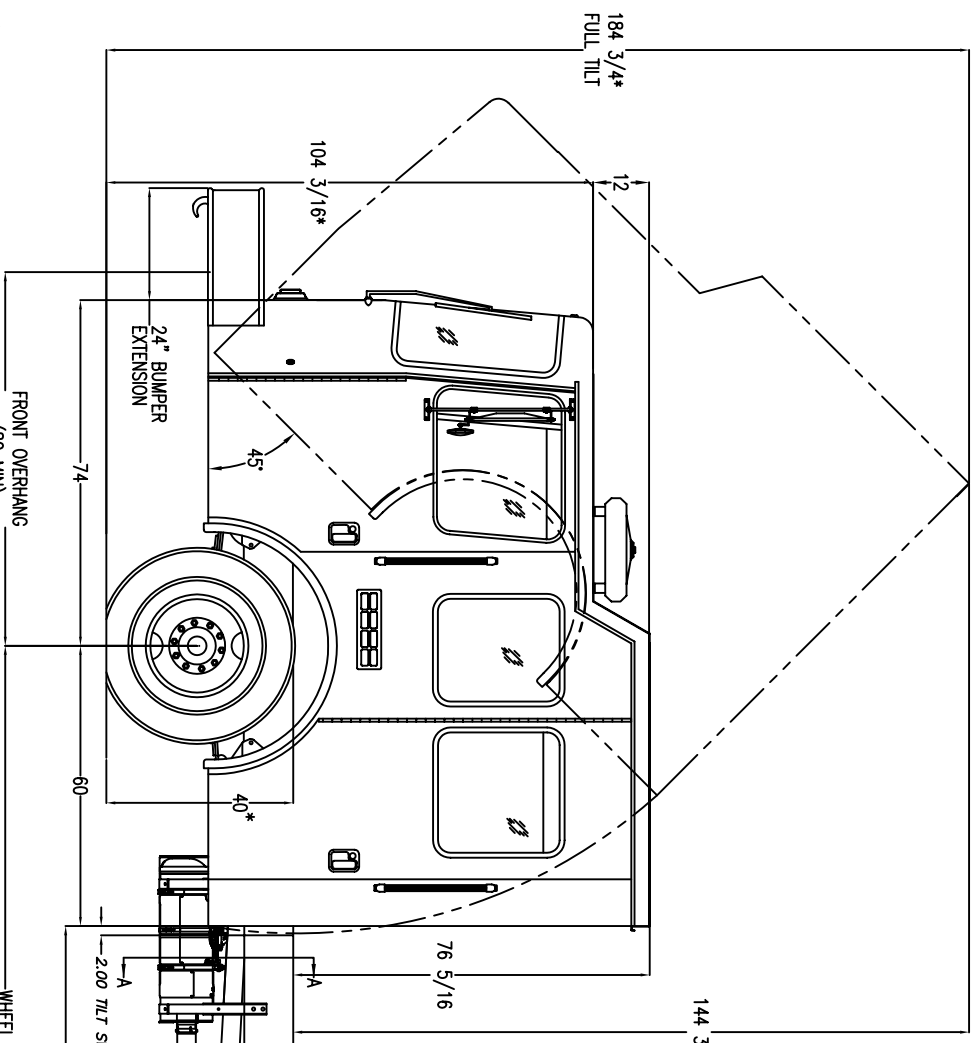
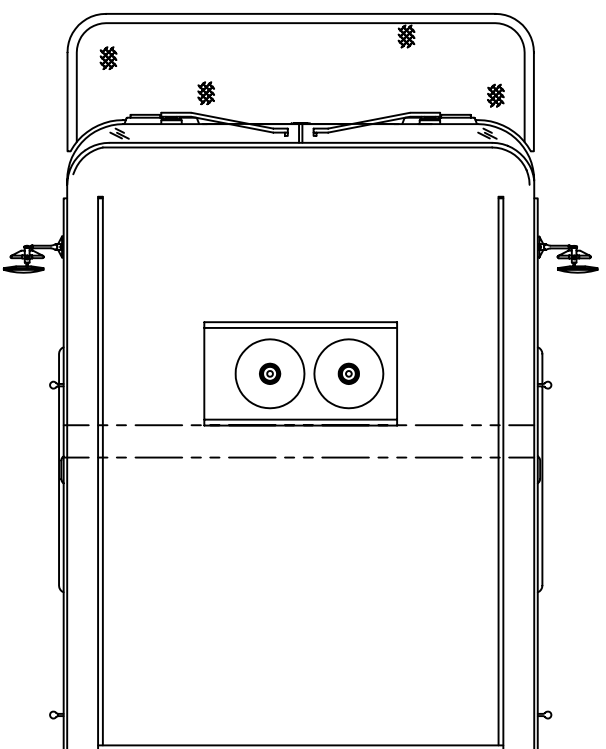
9.50  
TANK DIA.

11 1/16 CENTER  
OF DPF

29.50

28.3900  
REAR AXLE

34.00



184 3/4\*  
FULL TILT

104 3/16\*

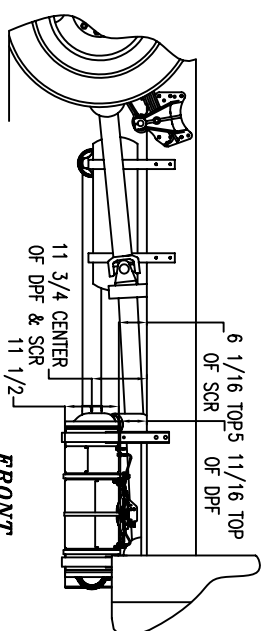
24" BUMPER  
EXTENSION

FRONT OVERHANG  
(80 MIN)

\*NOTE: THESE DIMENSIONS VARY DEPENDING ON  
LOAD. (REF. FRAME HEIGHT IS 40.00)

**WARNING: HIGH EXHAUST TEMPERATURE POTENTIAL**

During an active regeneration exhaust gases and system surfaces may reach temperatures well in excess of 1000 degrees Fahrenheit. Body Design must limit exposure to combustible or heat sensitive materials. To reduce the risk of physical injury or property damage a safe exhaust area (free of human activity and combustibles) must be established prior to enabling a stationary Regeneration.

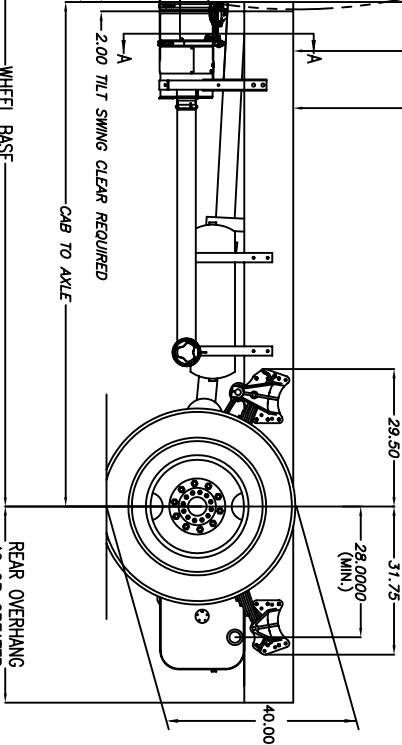


FRONT  
RH SIDE

6 1/16 TOPS 11 1/16 TOP  
OF SCR

11 3/4 CENTER  
OF DPF & SCR

11 1/2



REAR OVERHANG  
42 OR GREATER

WHEEL BASE

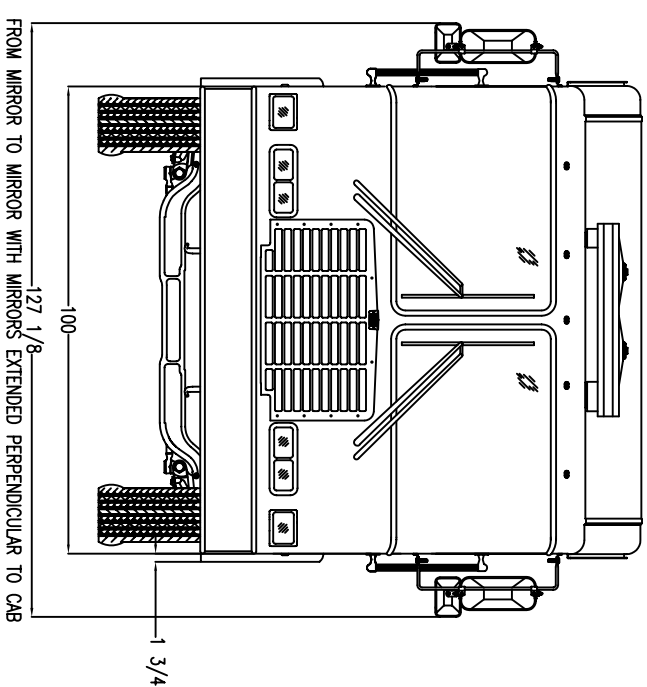
2.00 TILT SWING CLEAR REQUIRED  
CAB TO AXLE

76 5/16

29.50

31.75  
(MIN.)

40.00\*

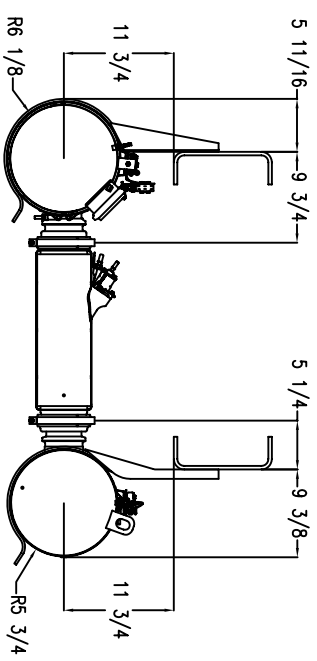


FROM MIRROR TO MIRROR WITH MIRRORS EXTENDED PERPENDICULAR TO CAB

127 1/8

100

1 3/4



SECTION A-A  
DPF/SCR

MATERIAL THICKNESSES

ROOF	3/16"
FRONT WALL	3/16"
REAR WALL	3/16"
FLOOR	3/16"
DOOR EXTERIORS	3/16"
SIDE WALLS	3/16"

CREATED WITH AutoCAD®

TOLERANCES:  
DRILLED HOLE LOCATING ±.010  
DRILL HOLE DIAMETER +.005/- .002  
CAST SURFACES ±1/16  
NOMINAL DIMENSIONS (WELDED FABRICATIONS) ±1/16  
SHEARD, SAWED, BURNED EDGES ±1/16  
LOCATING FINISHED (MACHINED) SURFACES ±.010  
ANGLES ±0 DEGREES 30 MINUTES  
LINEAR MEASURE IS IN INCHES

- NOTES:
- DO NOT SCALE DRAWING
  - BREAK ALL SHARP EDGES.
  - PRIME PAINT STEEL PARTS PER A-89541-1.
  - STAMP HME PART NO./REV. LET. ON METAL PARTS.
  - STENCIL HME PART NO./REV. LET. ON NON-METAL PARTS.
  - WELD DATA SEE A-28213
  - PUNCHED HOLE TOLERANCE PER A-89063
  - DIMENSIONS IN PARENTHESES (") ARE FOR REFERENCE.



1950 BYRON CENTER AVE.  
WYOMING, WY. 83409

THIS PRINT IS PROVIDED ON A RESTRICTED BASIS AND IS NOT TO BE USED IN ANY WAY DETRIMENTAL TO THE INTERESTS OF HME, INC.

LET	BY	DATE	APPR	REVISION
A	K.ADAMS	5 AUG 11		RELEASED FOR PRODUCTION

NAME	1871-VC 12" RR MFDX1 CAB w/DPF-SCR
DRAWN	K.ADAMS
DATE	5 AUG 11
DATE	5 AUG 11
APPROVED	
DISKETTE FILE	B60454-321.DWG
SCALE	N/A
SHEET	1 OF 1

BODY BUILDER - LAYOUT  
RR MFDX1 CAB w/DPF-SCR  
60454-321